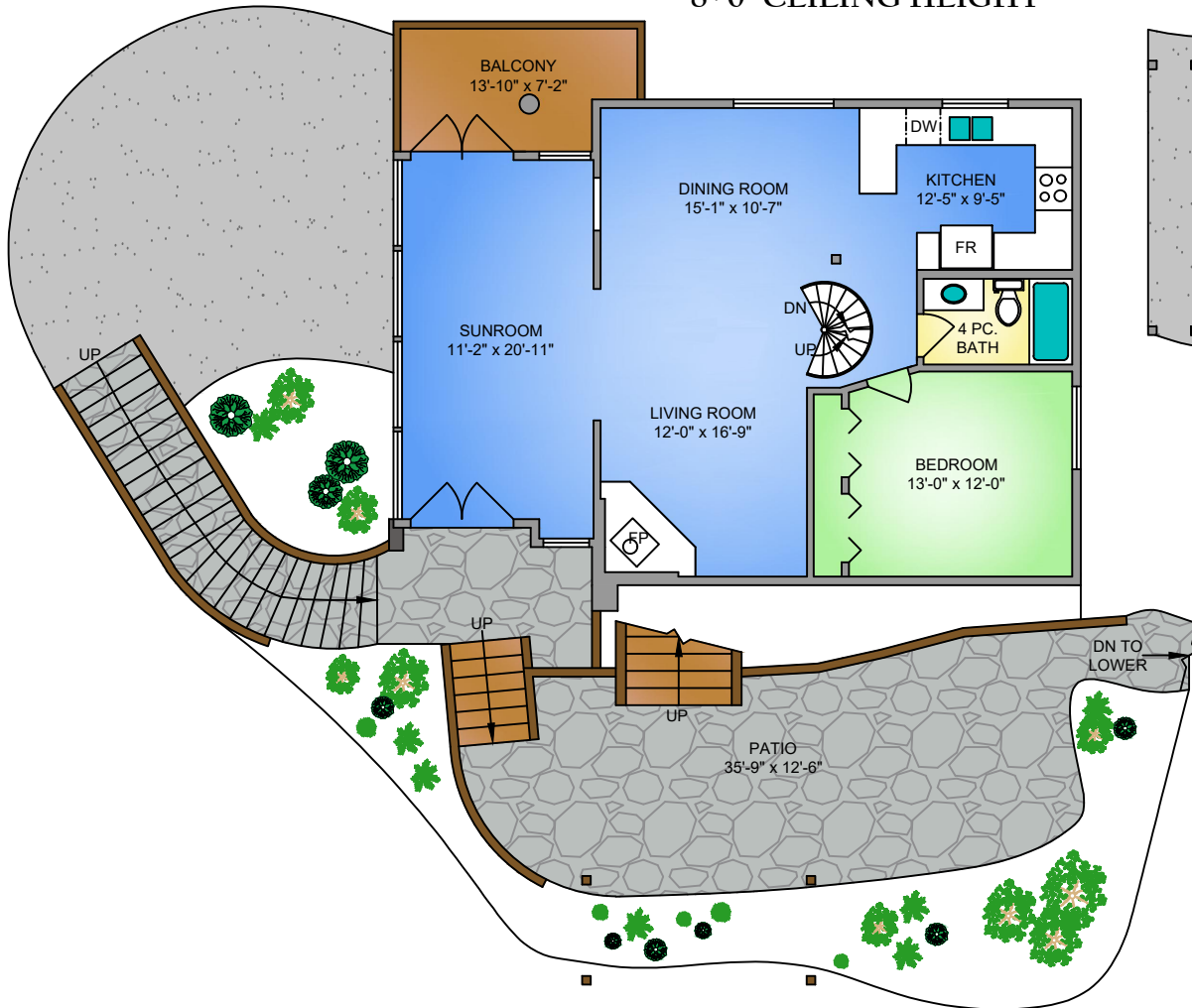
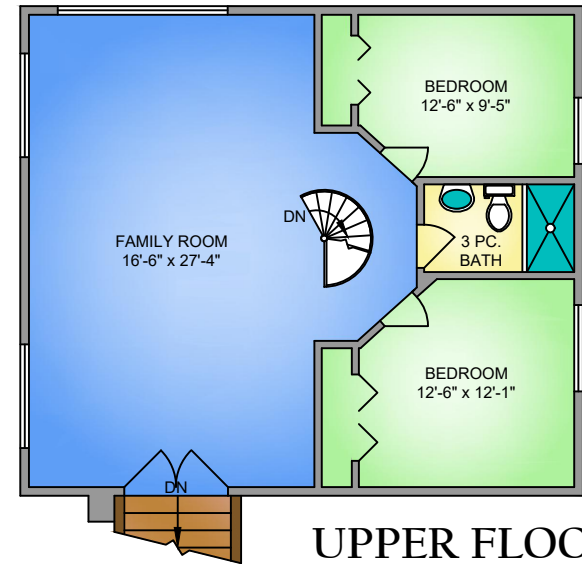
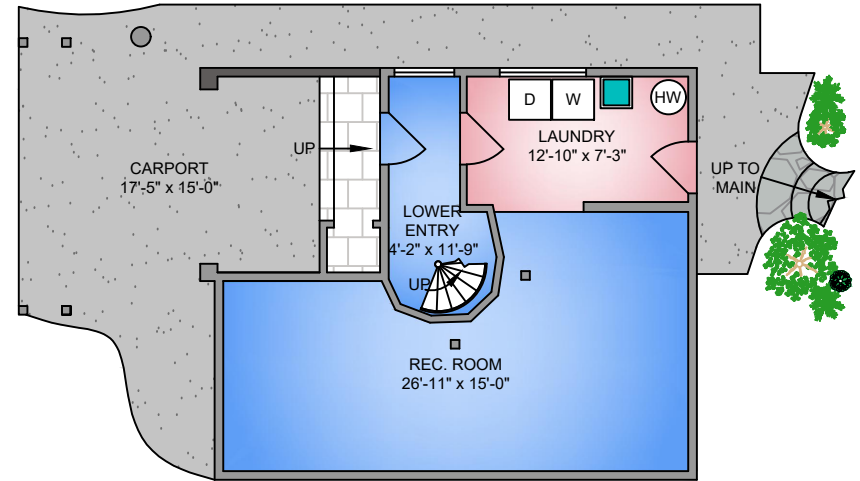


MAIN FLOOR
1065 SQ. FT.
 8'-0" CEILING HEIGHT

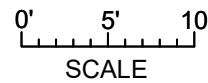
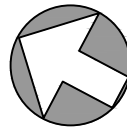


LOWER FLOOR
552 SQ. FT.
 8'-0" CEILING HEIGHT



UPPER FLOOR
922 SQ. FT.
 8'-0" CEILING HEIGHT

NORTH



3304 LODMELL ROAD MARCH 9, 2022				
PREPARED FOR THE EXCLUSIVE USE OF GLYNIS MACLEOD PLANS MAY NOT BE 100% ACCURATE, IF CRITICAL BUYER TO VERIFY.				
FLOOR	AREA (SQ. FT.)			
	FINISHED	GARAGE	CARPOT	BALCONY / PATIO
MAIN	1065	-	-	530
UPPER	922	-	-	-
LOWER	552	-	236	-
CARRIAGE HOUSE	648	648	-	-
TOTAL	2923	648	236	530

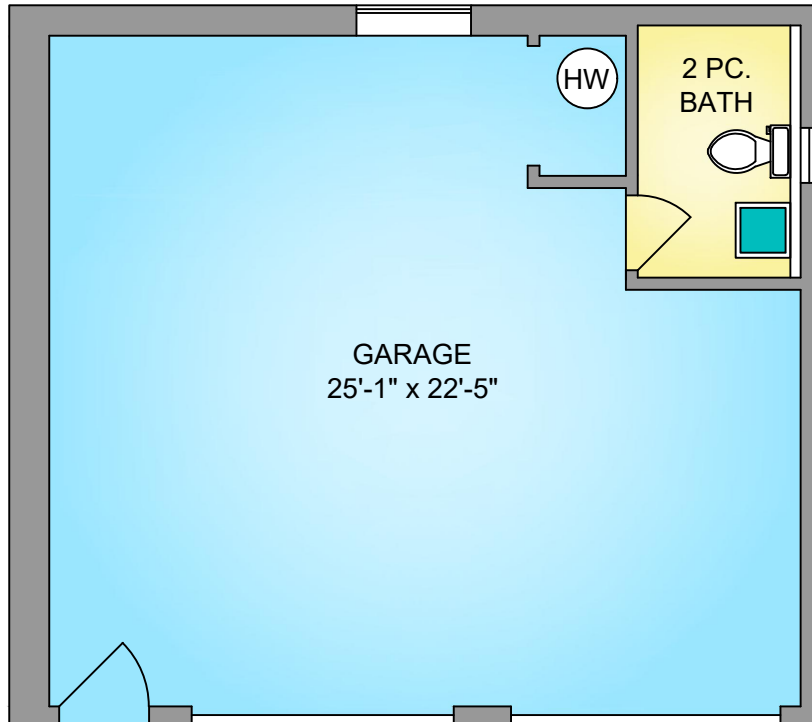
Sotheby's
 INTERNATIONAL REALTY

Canada

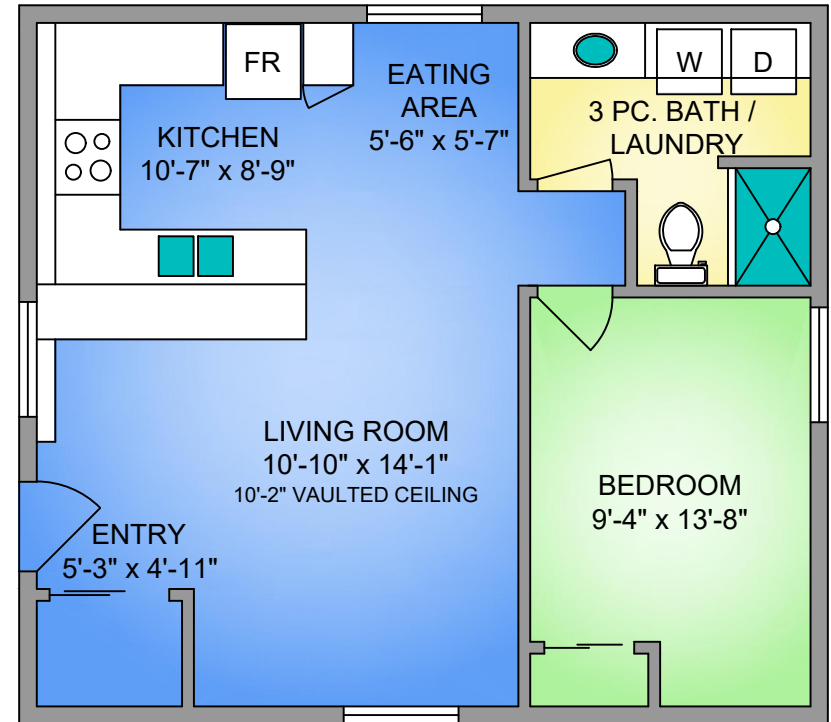


250-884-9753
 matt@propermeasure.com
 www.propermeasure.com

GARAGE
648 SQ. FT.
 9'-0" CEILING HEIGHT



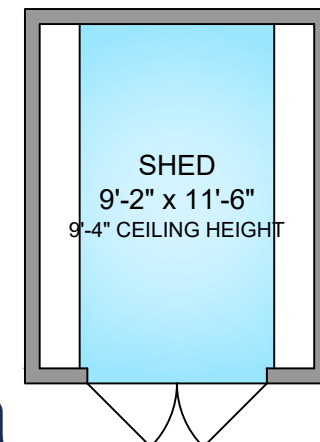
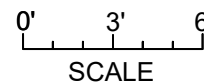
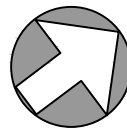
CARRIAGE HOUSE
648 SQ. FT.
 10'-2" CEILING HEIGHT



3304 LODMELL ROAD
 MARCH 9, 2022
 PREPARED FOR THE EXCLUSIVE USE OF GLYNIS MACLEOD
 PLANS MAY NOT BE 100% ACCURATE, IF CRITICAL BUYER TO VERIFY.

FLOOR	AREA (SQ. FT.)			
	FINISHED	GARAGE	CARPORT	BALCONY / PATIO
MAIN	1065	-	-	530
UPPER	922	-	-	-
LOWER	552	-	236	-
CARRIAGE HOUSE	648	648	-	-
TOTAL	2923	648	236	530

NORTH



250-884-9753
 matt@propermeasure.com
 www.propermeasure.com

Sotheby's
 INTERNATIONAL REALTY

Canada