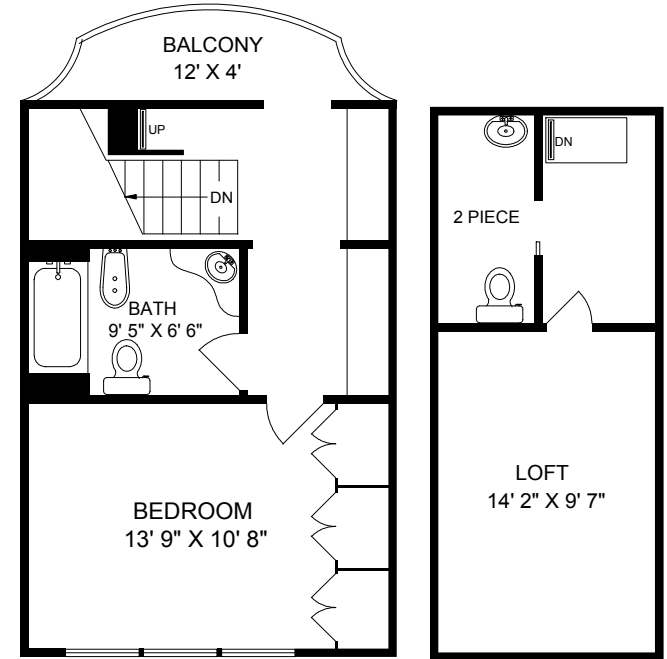
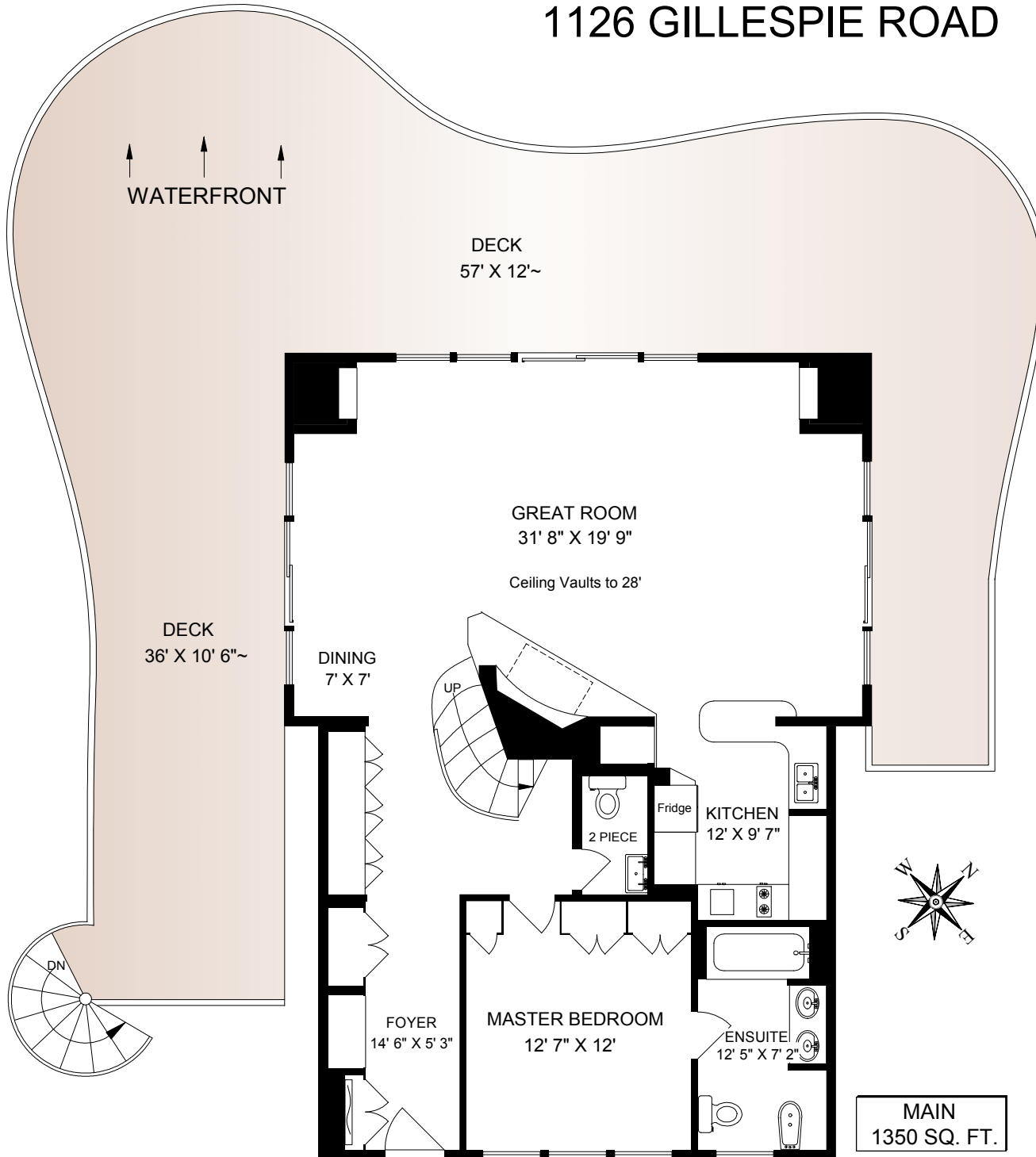


# 1126 GILLESPIE ROAD



**UPPER**  
454 SQ. FT.

**LOFT**  
158 SQ. FT.



**MAIN**  
1350 SQ. FT.

0' scale: 5'

|       | FINISH<br>SQ. FT. | UNFINISH<br>SQ. FT. | TOTAL<br>SQ. FT. |
|-------|-------------------|---------------------|------------------|
| MAIN  | 1350              |                     | 1350             |
| UPPER | 454               |                     | 454              |
| LOFT  | 158               |                     | 158              |
| TOTAL | 1962              |                     | 1962             |
| DECK  |                   | 1360                | 1360             |

FOR THE EXCLUSIVE USE OF GLYNIS MACLEOD  
SOTHEBY'S INTERNATIONAL REALTY CANADA

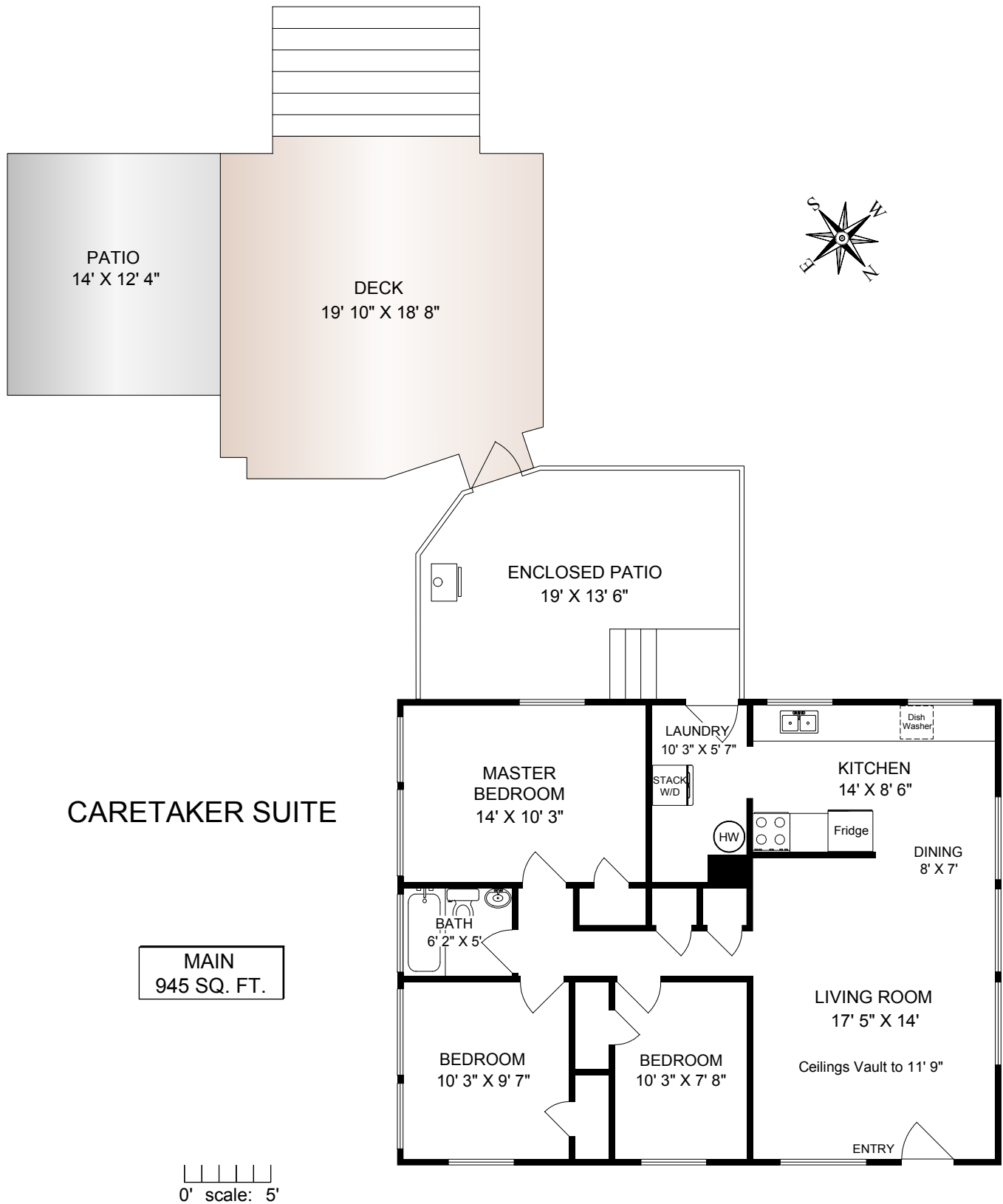
JULY 5 2017

REF # 5138

**Island Measure**  
Residential and Commercial Floor Plans  
250-818-8273

MEASUREMENTS MAY NOT BE 100% ACCURATE. IF CRITICAL, BUYER TO VERIFY.  
ROOM SIZES ARE NOT USED TO CALCULATE AREA.  
FLOOR PLANS ARE PROVIDED FOR CONVENIENCE ONLY.

# 1126 GILLESPIE ROAD



|             | FINISH<br>SQ. FT. | UNFINISH<br>SQ. FT. | TOTAL<br>SQ. FT. |
|-------------|-------------------|---------------------|------------------|
| MAIN        | 945               |                     | 945              |
| TOTAL       | 945               |                     | 945              |
| ENCL. PATIO |                   | 245                 | 245              |
| DECK        |                   | 356                 | 356              |
| PATIO       |                   | 173                 | 173              |

|                                                                                                                                                                      |                                                                                       |
|----------------------------------------------------------------------------------------------------------------------------------------------------------------------|---------------------------------------------------------------------------------------|
| FOR THE EXCLUSIVE USE OF GLYNIS MACLEOD<br>SOTHEBY'S INTERNATIONAL REALTY CANADA                                                                                     |                                                                                       |
| JULY 5 2017                                                                                                                                                          |  |
| REF # 5138                                                                                                                                                           | Residential and Commercial Floor Plans                                                |
| 250-818-8273                                                                                                                                                         |                                                                                       |
| MEASUREMENTS MAY NOT BE 100% ACCURATE. IF CRITICAL, BUYER TO VERIFY.<br>ROOM SIZES ARE NOT USED TO CALCULATE AREA.<br>FLOOR PLANS ARE PROVIDED FOR CONVENIENCE ONLY. |                                                                                       |