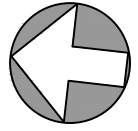
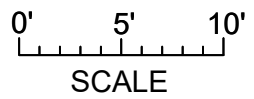




LOWER FLOOR
836 SQ. FT.
7'-2" CEILING HEIGHT

NORTH

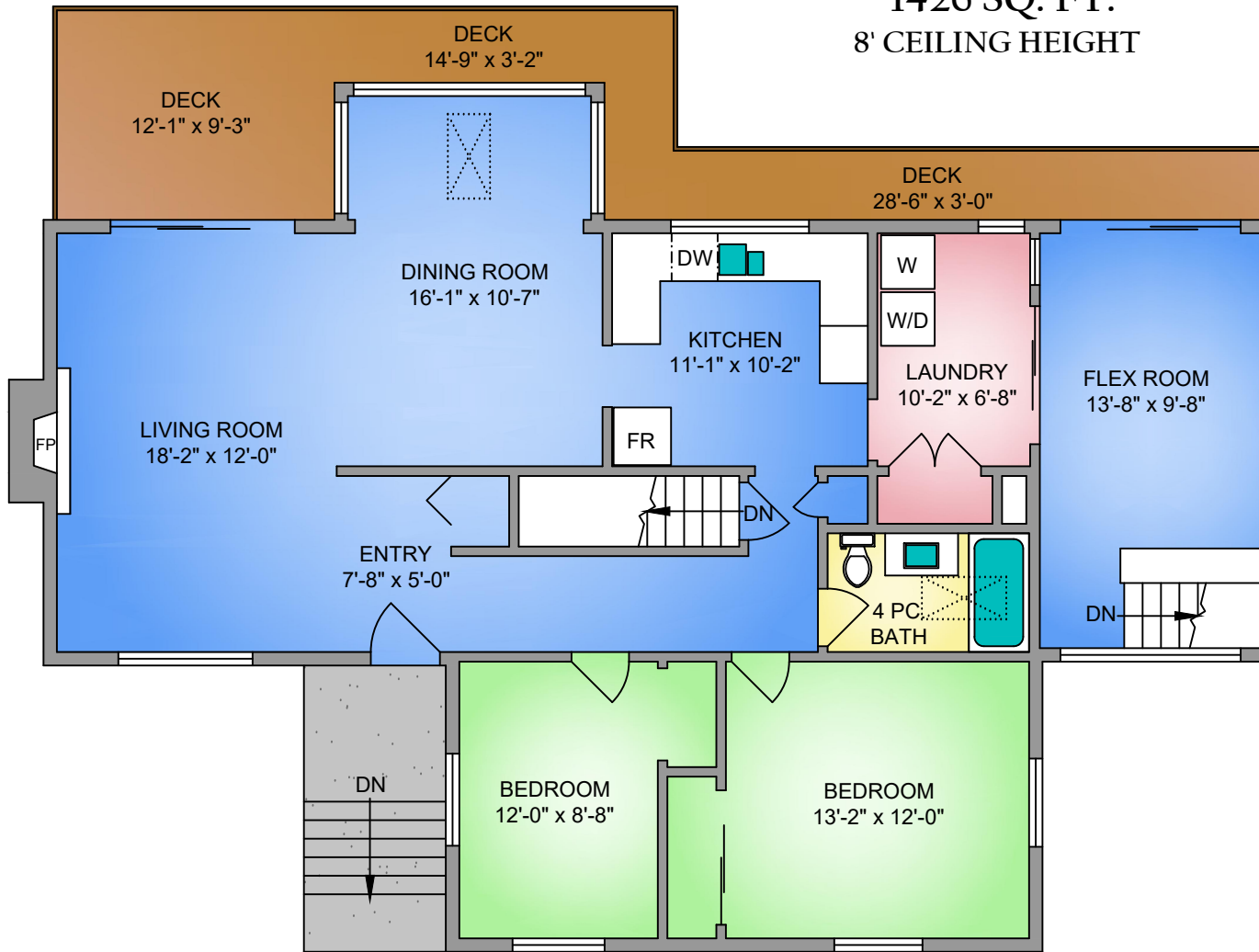


8623 MOXON TERRACE MAY 17, 2021				
PREPARED FOR THE EXCLUSIVE USE OF THE MACLEOD GROUP PLANS MAY NOT BE 100% ACCURATE, IF CRITICAL BUYER TO VERIFY.				
FLOOR	AREA (SQ. FT.)			
	FINISHED	UNFINISHED	GARAGE	DECK / PATIO
MAIN	1426	-	-	251
LOWER	836	327	425	532
TOTAL	2262	327	425	783



250-884-9753
 matt@propermeasure.com
 www.propermeasure.com

MAIN FLOOR
1426 SQ. FT.
8' CEILING HEIGHT



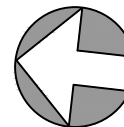
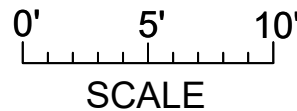
Sotheby's
 INTERNATIONAL REALTY

Canada

NORTH



250-884-9753
 matt@propermeasure.com
 www.propermeasure.com



8623 MOXON TERRACE MAY 17, 2021				
PREPARED FOR THE EXCLUSIVE USE OF THE MACLEOD GROUP PLANS MAY NOT BE 100% ACCURATE, IF CRITICAL BUYER TO VERIFY.				
FLOOR	AREA (SQ. FT.)			
	FINISHED	UNFINISHED	GARAGE	DECK / PATIO
MAIN	1426	-	-	251
LOWER	836	327	425	532
TOTAL	2262	327	425	783