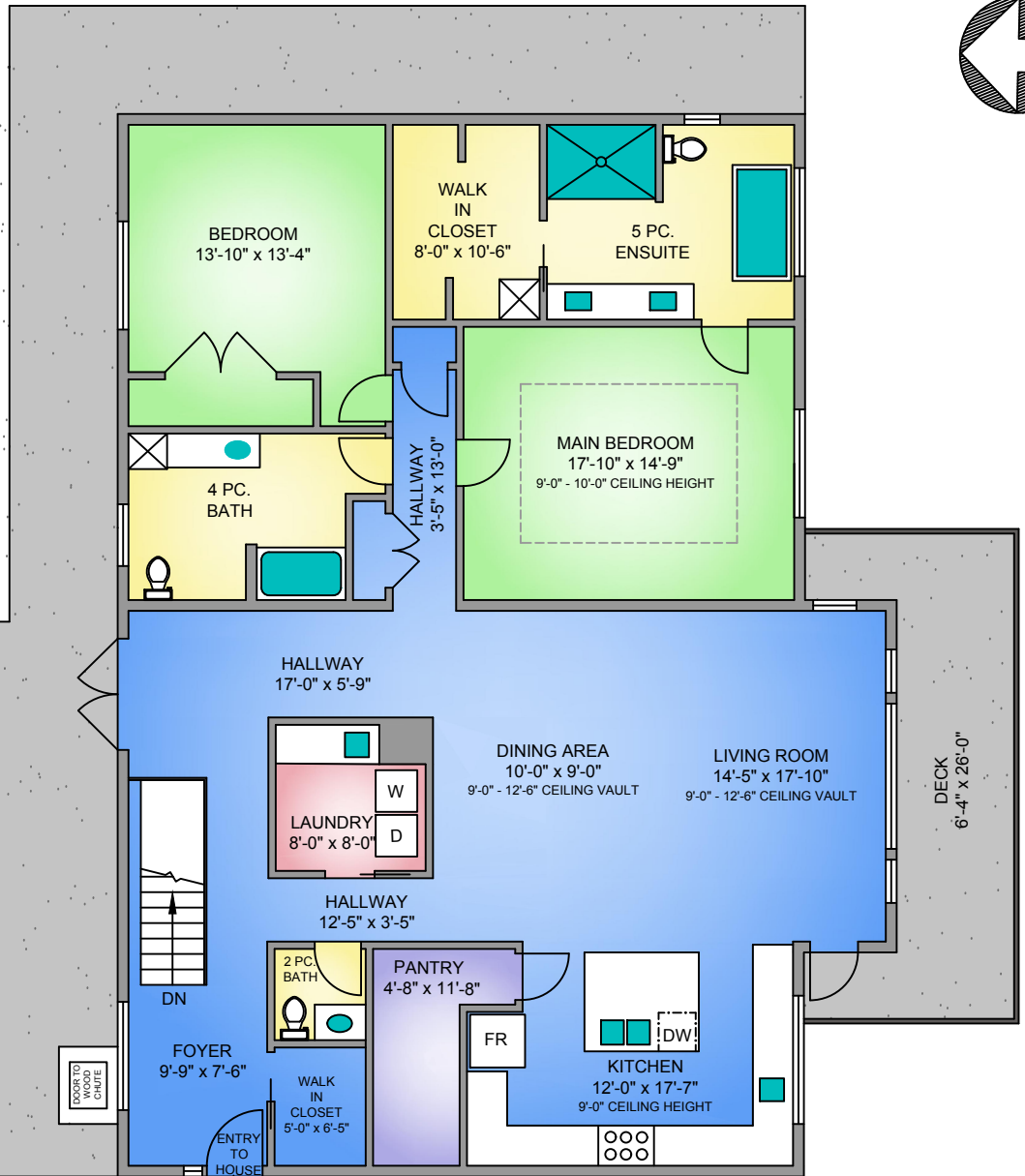
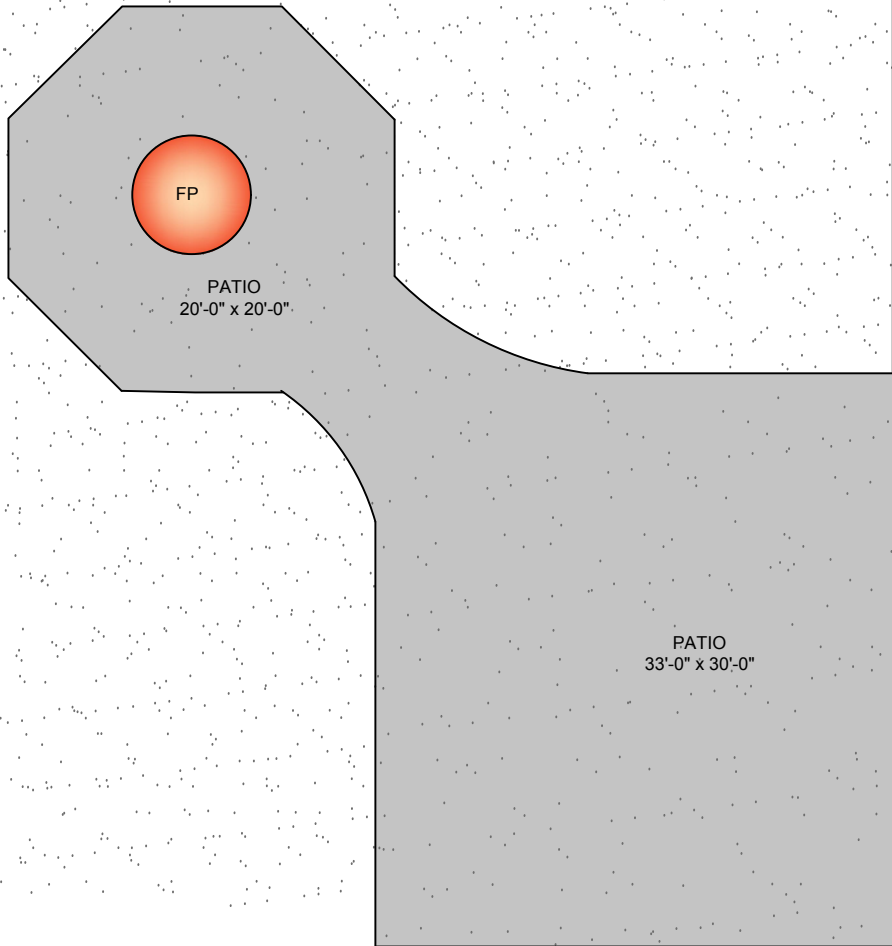
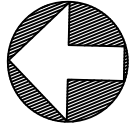


# MAIN FLOOR

2216 SQ. FT.

9'-0" - 12'-6" VAULTED CEILING

NORTH



7695 LAKE COWICHAN ROAD

DECEMBER 16, 2020

PREPARED FOR THE EXCLUSIVE USE OF THE MACLEOD GROUP  
PLANS MAY NOT BE 100% ACCURATE, IF CRITICAL BUYER TO VERIFY.

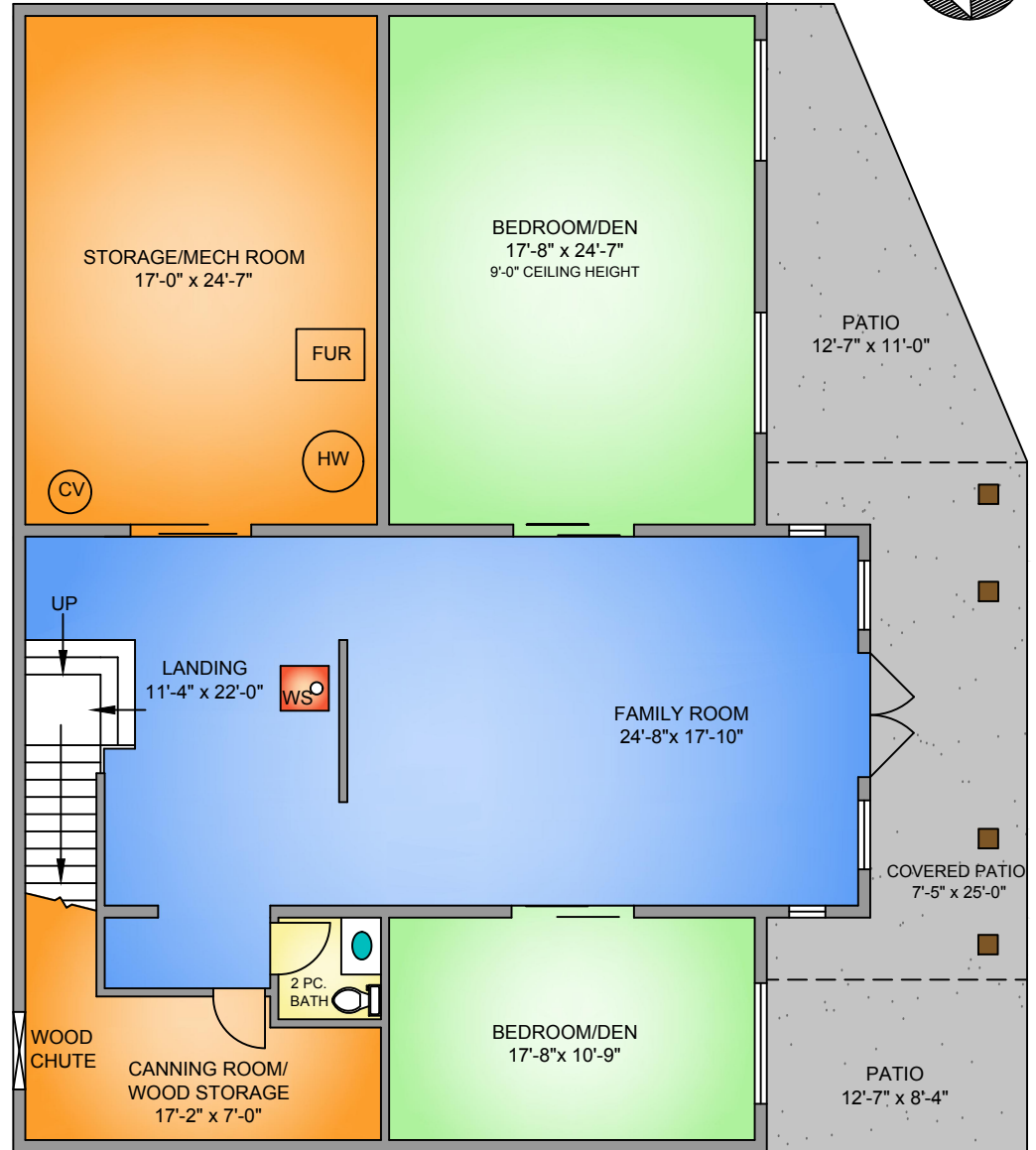
FLOOR	TOTAL	AREA (SQ. FT.)		
		FINISHED	GARAGE	DECK / PATIO
MAIN	2216	2216	1216	1976
LOWER	2116	2116		465
<b>TOTAL</b>	<b>4332</b>	<b>4332</b>	<b>1216</b>	<b>2441</b>

Sotheby's | Canada  
INTERNATIONAL REALTY

**GARAGE/WORKSHOP**  
**1216 SQ. FT.**  
 12'-0" CEILING HEIGHT



**LOWER FLOOR**  
**2116 SQ. FT.**  
 9'-0" CEILING HEIGHT



**Sotheby's** | Canada  
 INTERNATIONAL REALTY

7695 LAKE COWICHAN ROAD  
 DECEMBER 16, 2020

PREPARED FOR THE EXCLUSIVE USE OF THE MACLEOD GROUP  
 PLANS MAY NOT BE 100% ACCURATE, IF CRITICAL BUYER TO VERIFY.

FLOOR	TOTAL	AREA (SQ. FT.)		
		FINISHED	GARAGE	DECK / PATIO
MAIN	2216	2216	1216	1976
LOWER	2116	2116		465
<b>TOTAL</b>	<b>4332</b>	<b>4332</b>	<b>1216</b>	<b>2441</b>