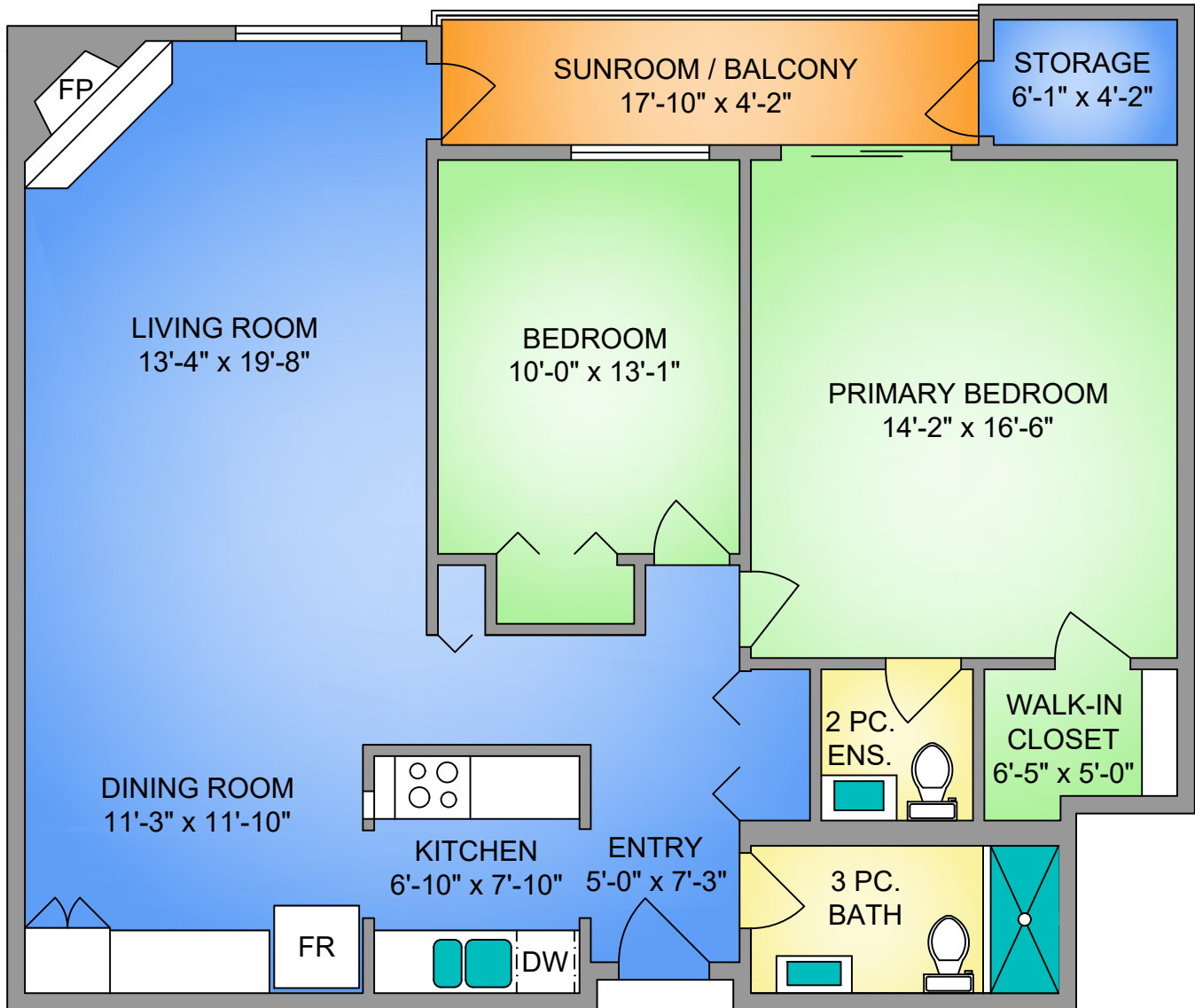


UNIT 302 - 1610 JUBILEE AVENUE  
 1158 SQ. FT.  
 8' CEILING HEIGHT



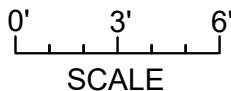
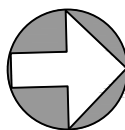
**Sotheby's**  
INTERNATIONAL REALTY

**Canada**



250-884-9753  
 matt@propermeasure.com  
 www.propermeasure.com

NORTH



UNIT 302 - 1610 JUBILEE AVENUE		
MARCH 15, 2023		
PREPARED FOR THE EXCLUSIVE USE OF GLYNIS MACLEOD		
PLANS MAY NOT BE 100% ACCURATE, IF CRITICAL BUYER TO VERIFY.		
FLOOR	AREA (SQ. FT.)	
	FINISHED	SUNROOM / BALCONY
THIRD	1158	74